



A Line Made By Walking
**Adaptation To Climate Change In Forestry
Across Europe**

*Rita SOUSA-SILVA,
Bruno VERBIST, Quentin PONETTE, Kris VERHEYEN, Bart MUYS*



A LINE MADE BY WALKING

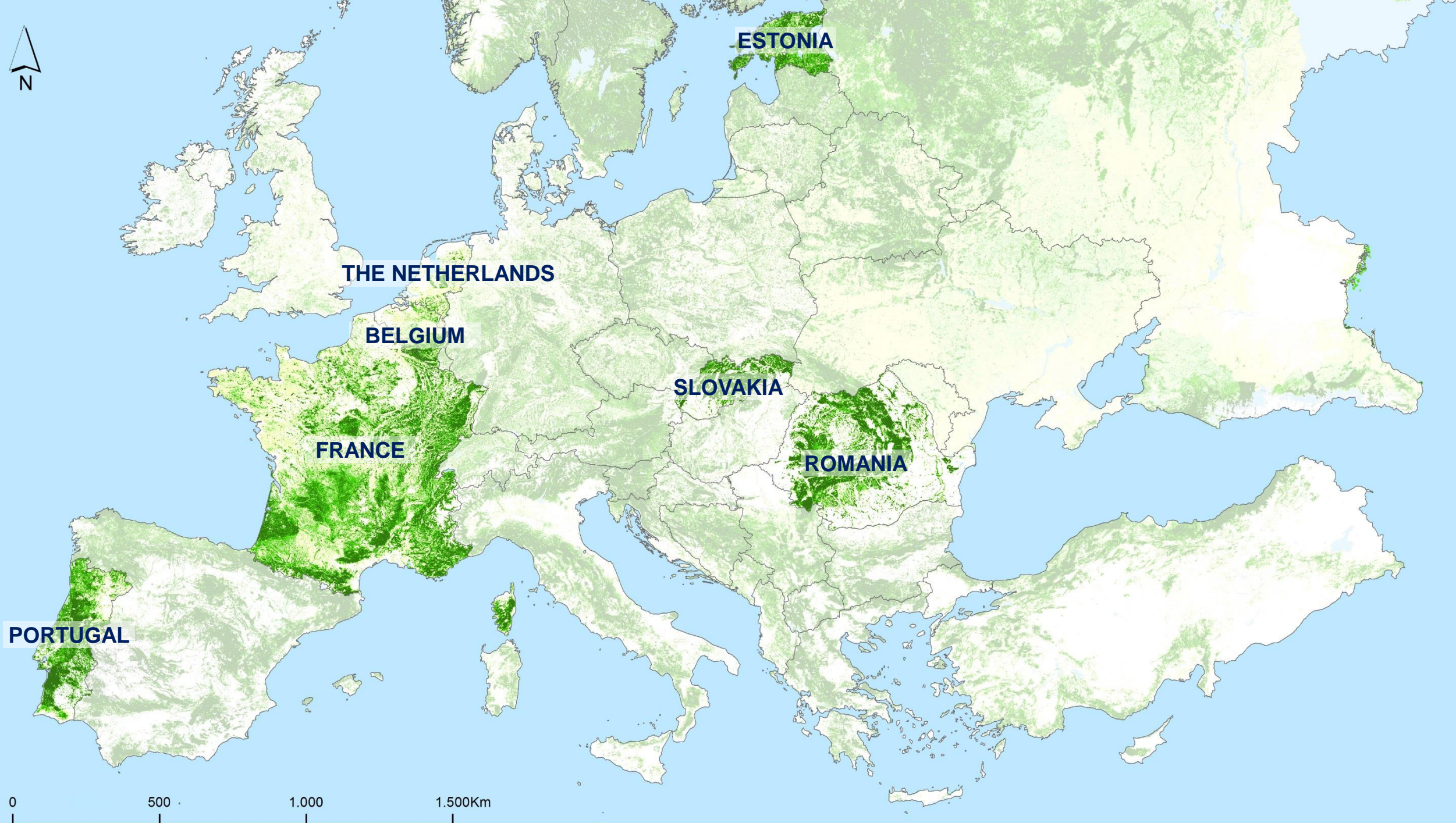
Context



Climate change



Forest management



0 500 1.000 1.500Km

Respondents



Belgium

Estonia

France

Netherlands

Portugal

Romania

Slovakia

	Belgium	Estonia	France	Netherlands	Portugal	Romania	Slovakia	
Forest owner	234	35	170	13	83	8	40	583
Forest manager, public forest	79	2	0	3	8	162	39	293
Forest manager, private forest	78	3	33	4	24	34	37	213
<i>Number of responses</i>	391	40	203	20	115	246	116	1131

Questions



Perceptions



Experiences



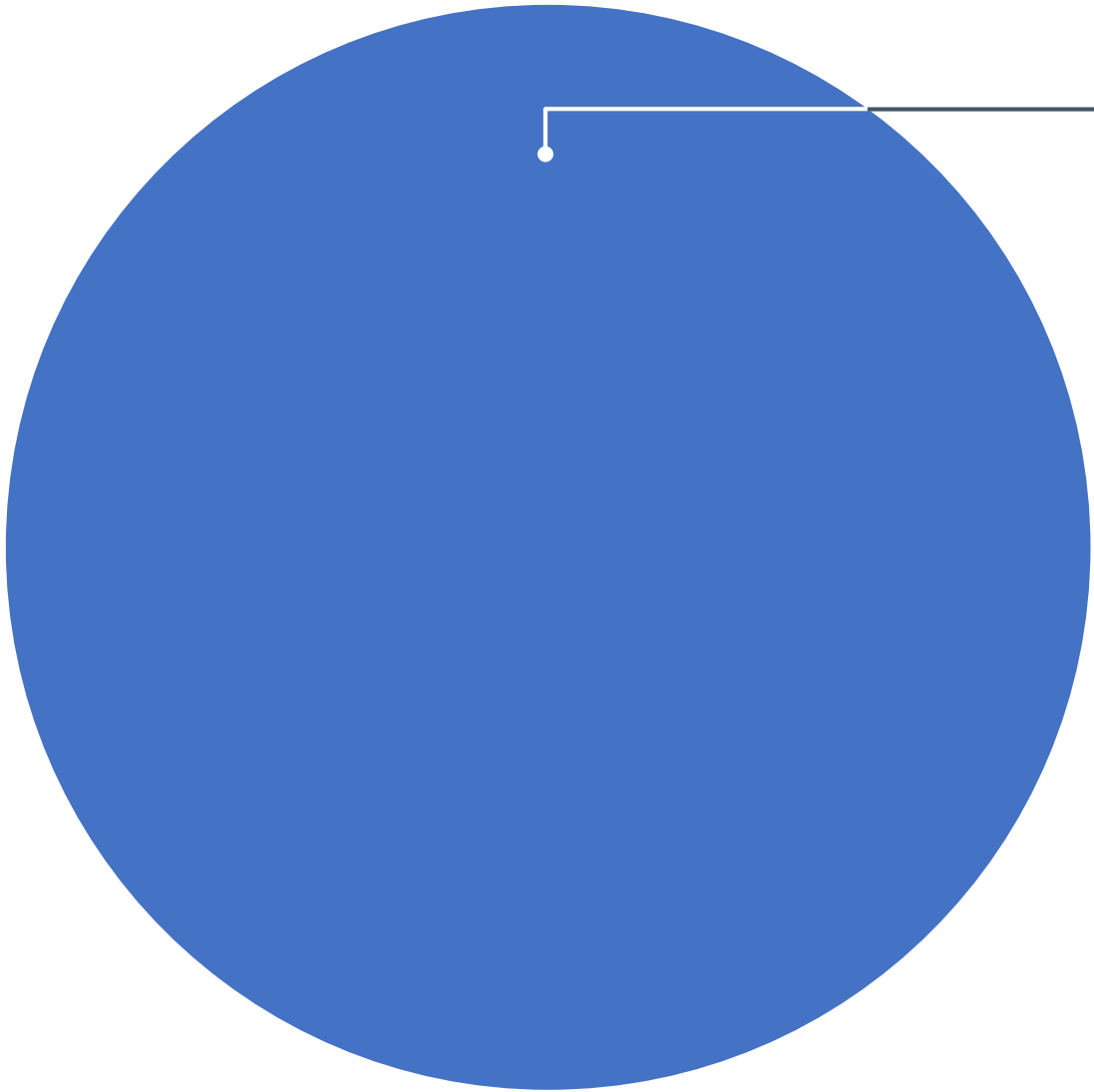
Impacts



Adaptation

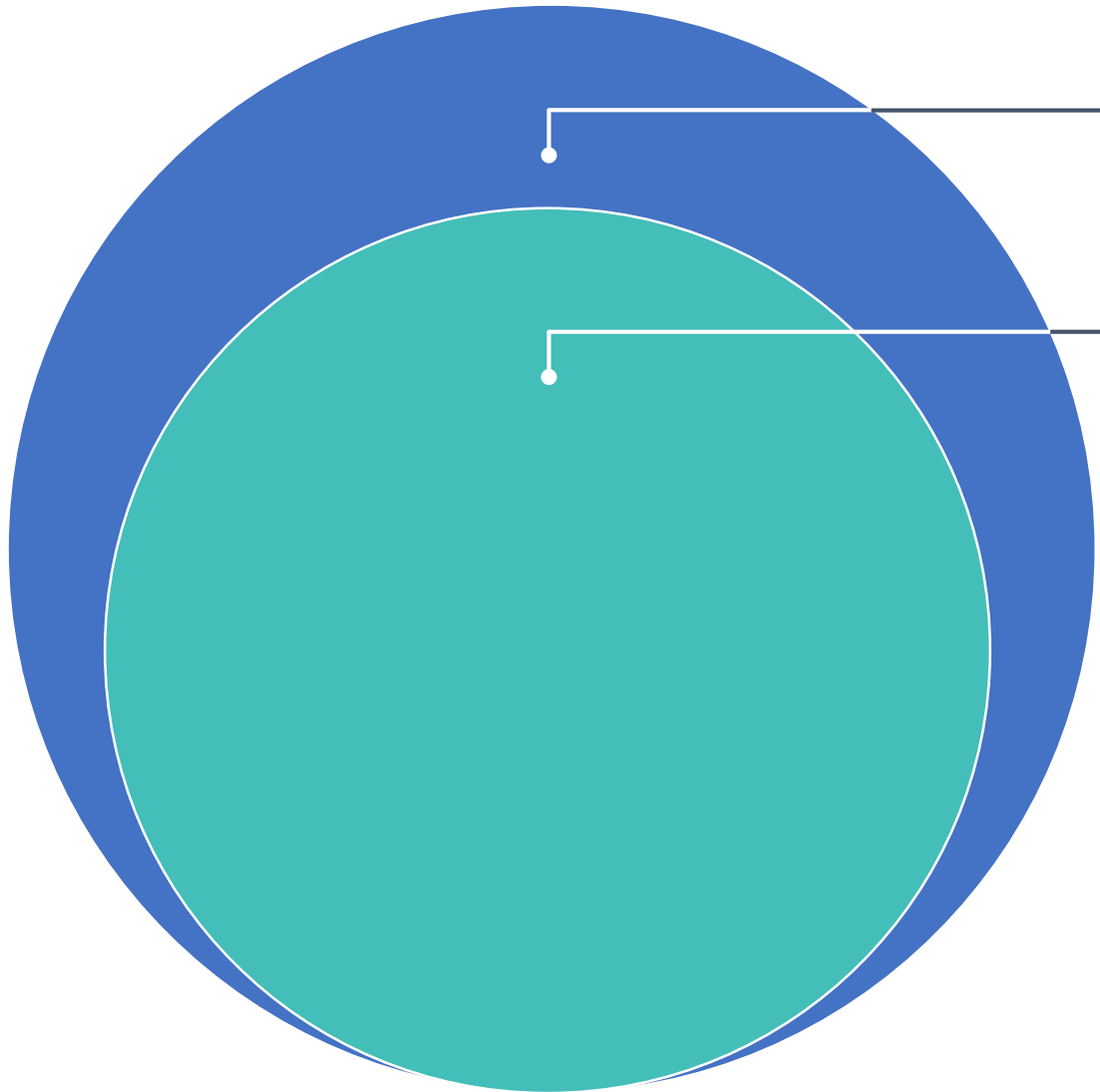


Perceptions



91%
believe in
climate change



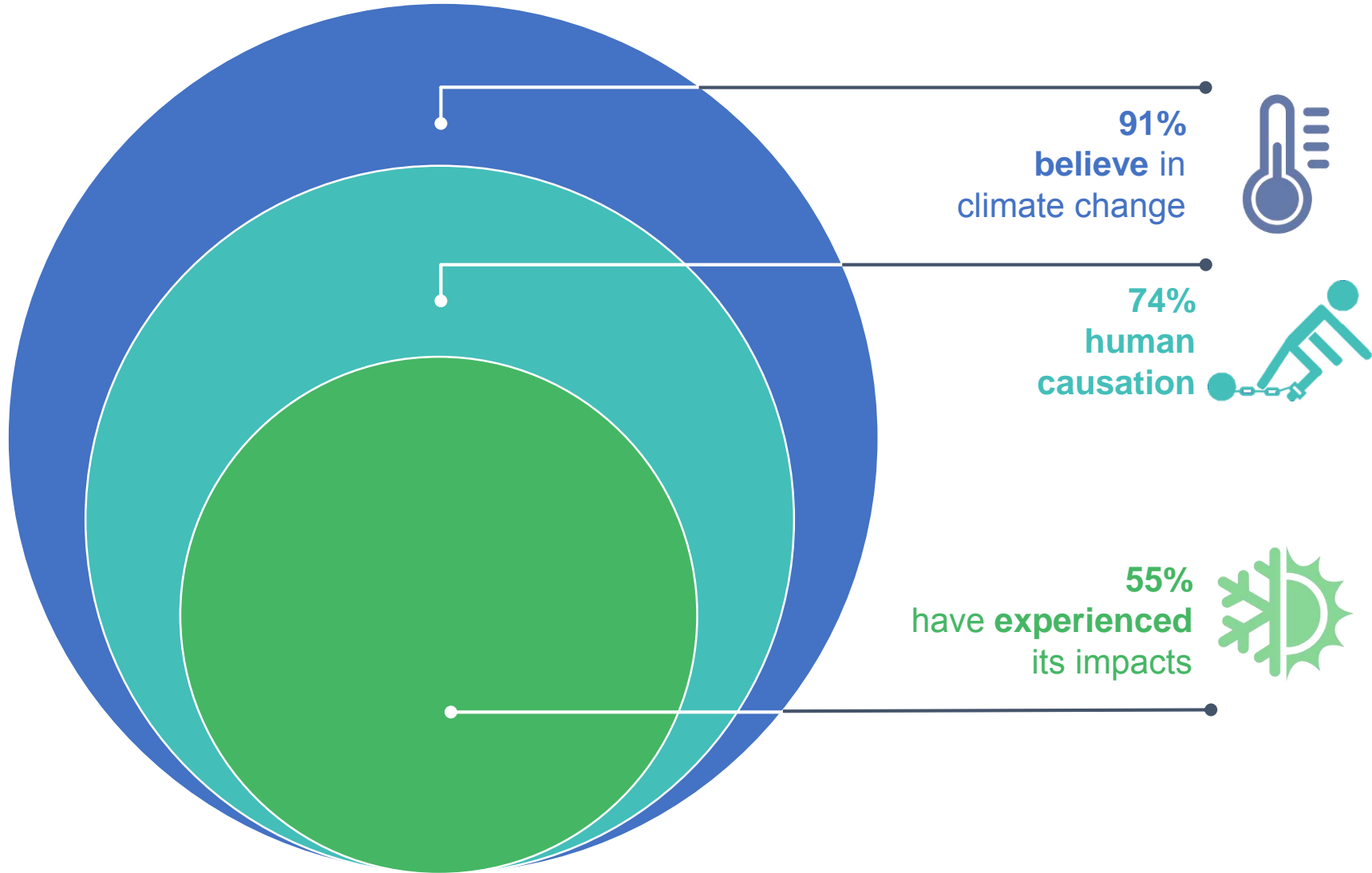


91%
believe in
climate change



74%
human
causation







Perceptions



Experiences



33%
windstorms and
drought



24% heat waves



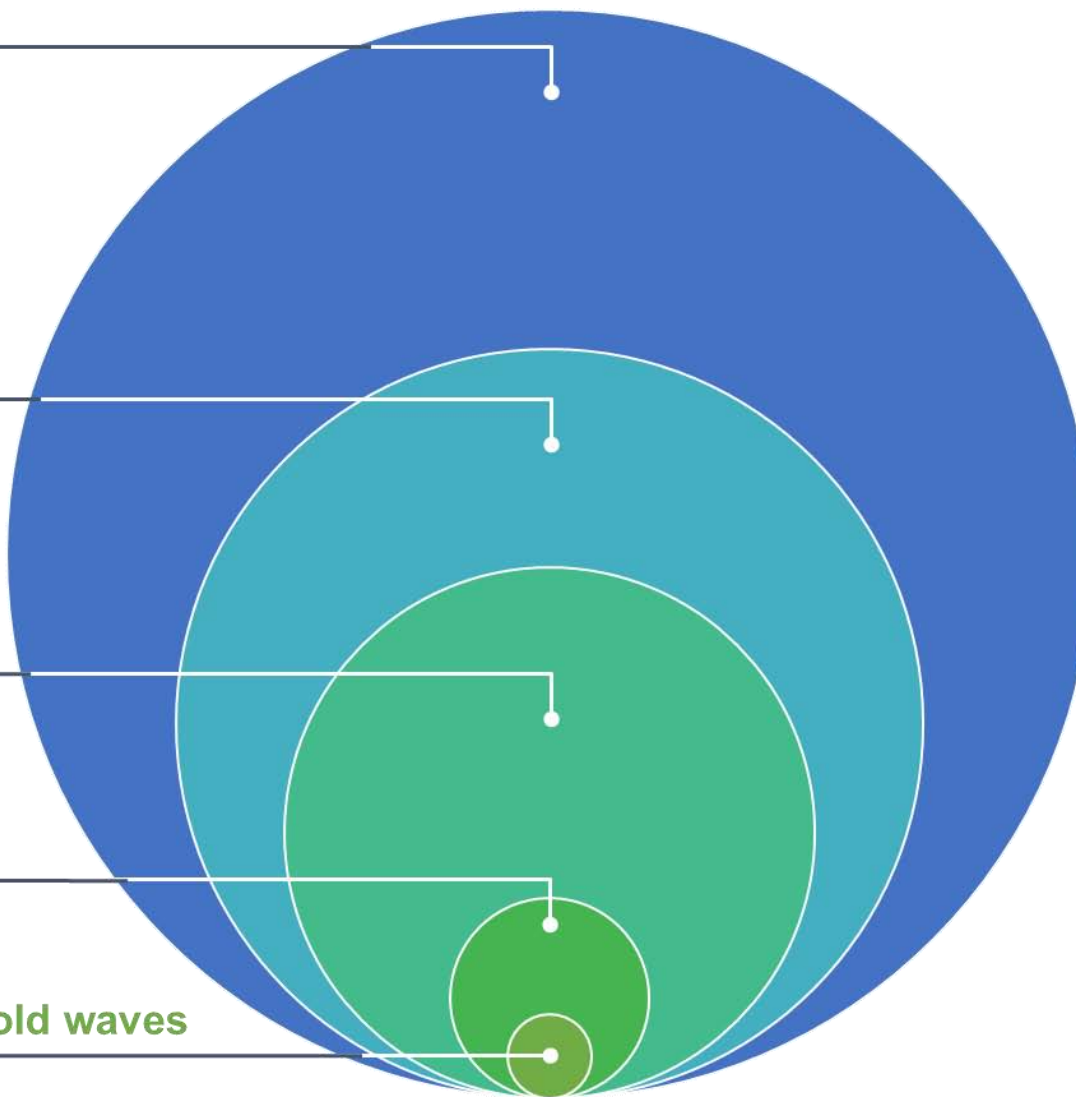
18%
extreme
precipitation



5%
early and late **frost**

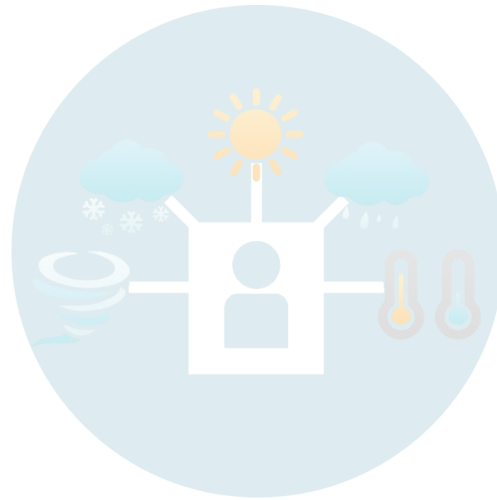


3%
snowstorms and **cold waves**





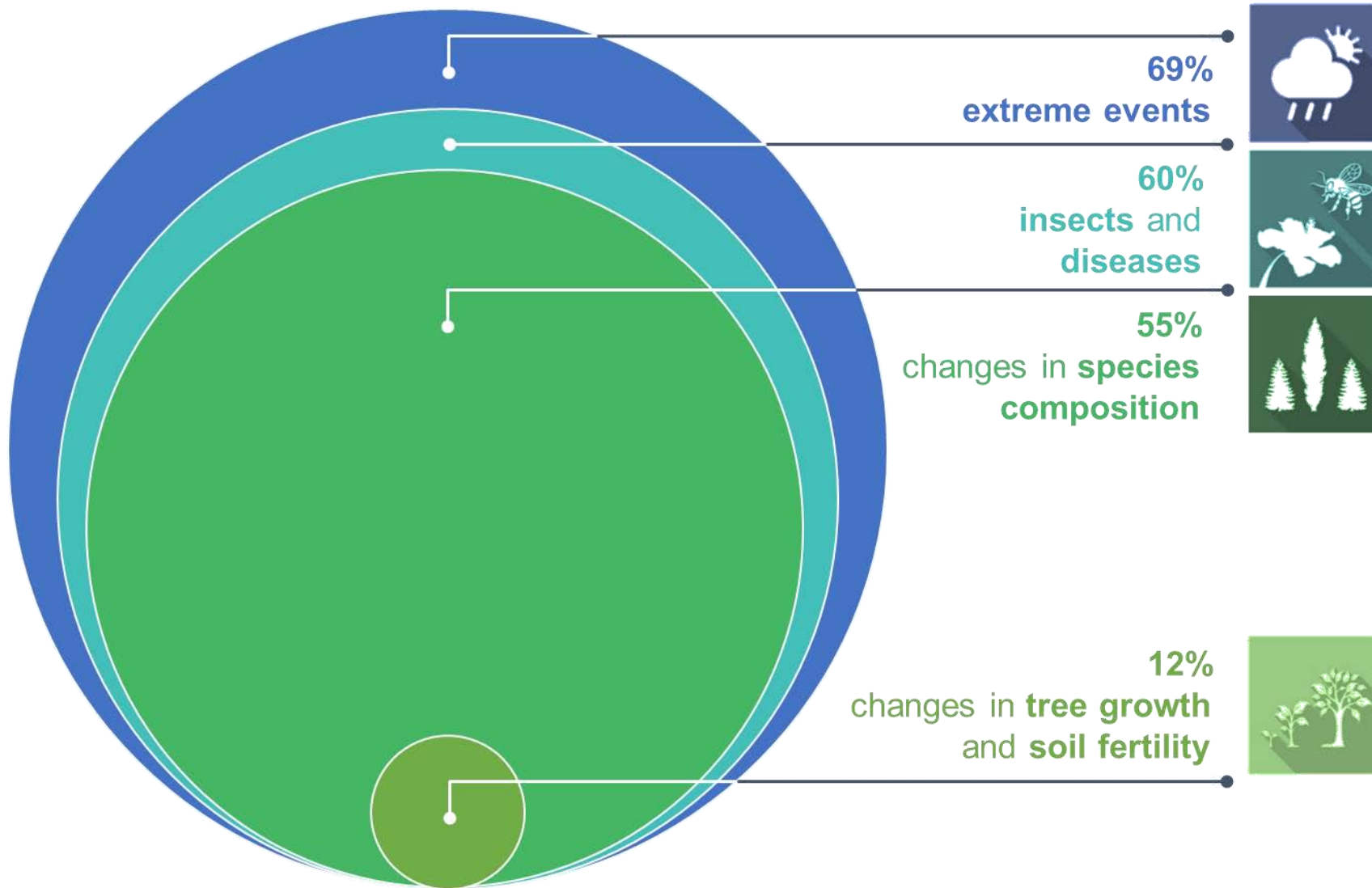
Perceptions



Experiences

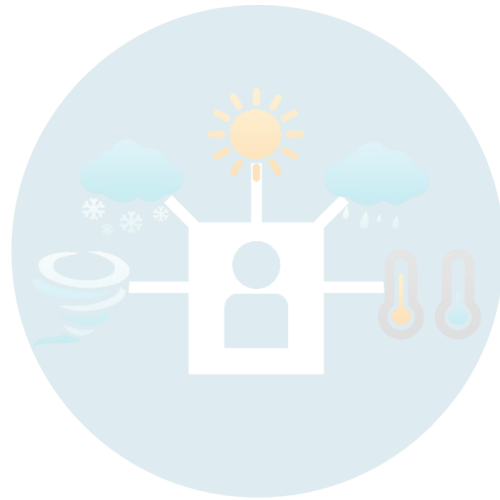


Impacts





Perceptions



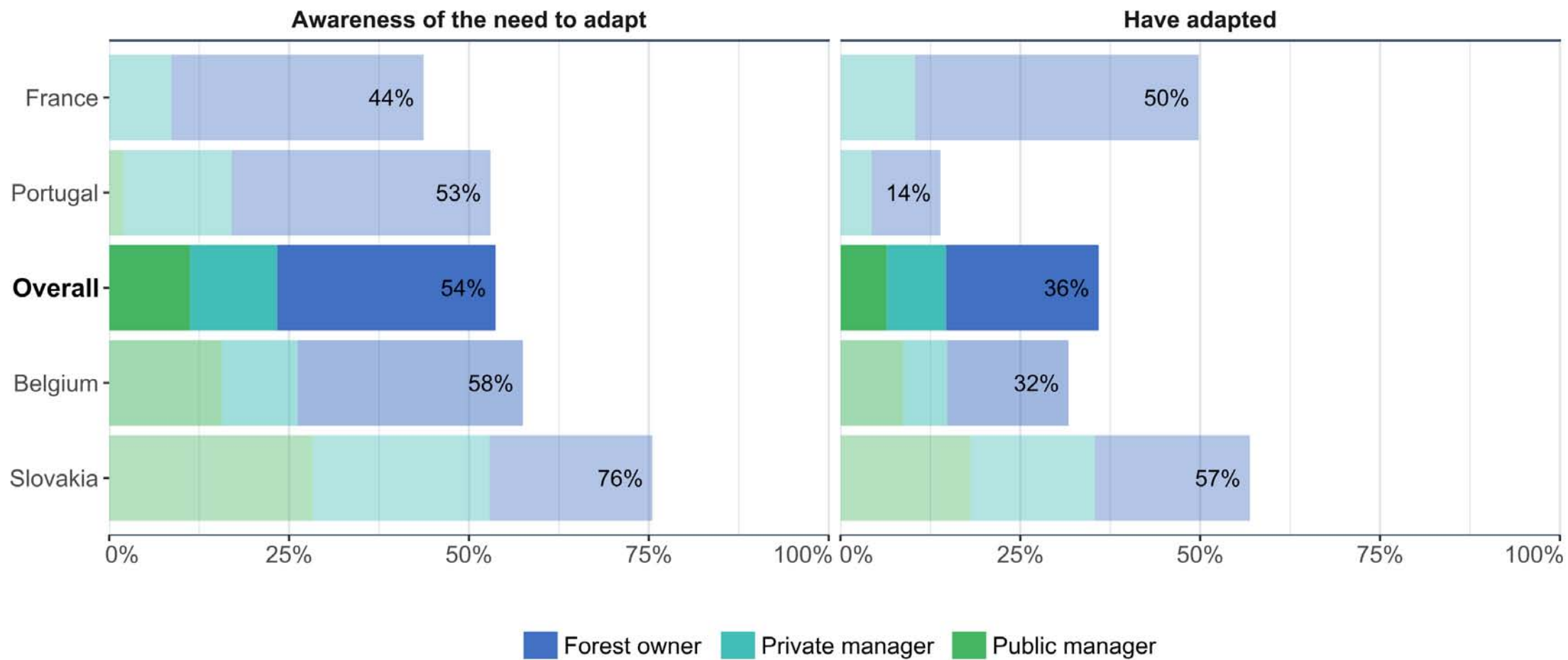
Experiences



Impacts



Adaptation





- Choice of species: planting better adapted species and increasing natural regeneration
- Promoting mixed stands
- Monitoring damage
- Changing rotation time and harvesting techniques
- Changing intensity and frequency of thinning
- Changing production goals
- Insurance scheme



19%
lack of **technical knowledge**



17%
lack of **information**



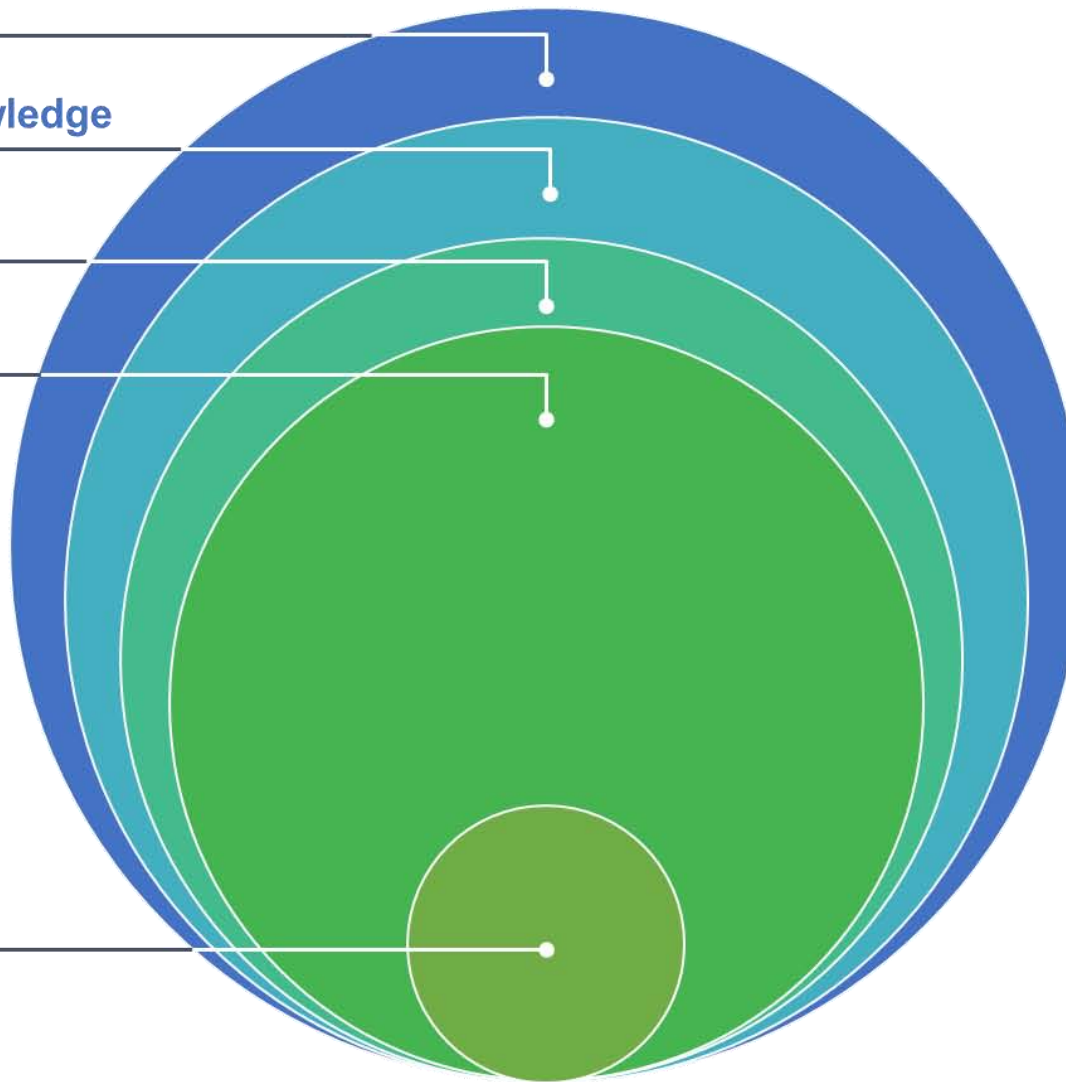
15%
lack of **conviction**

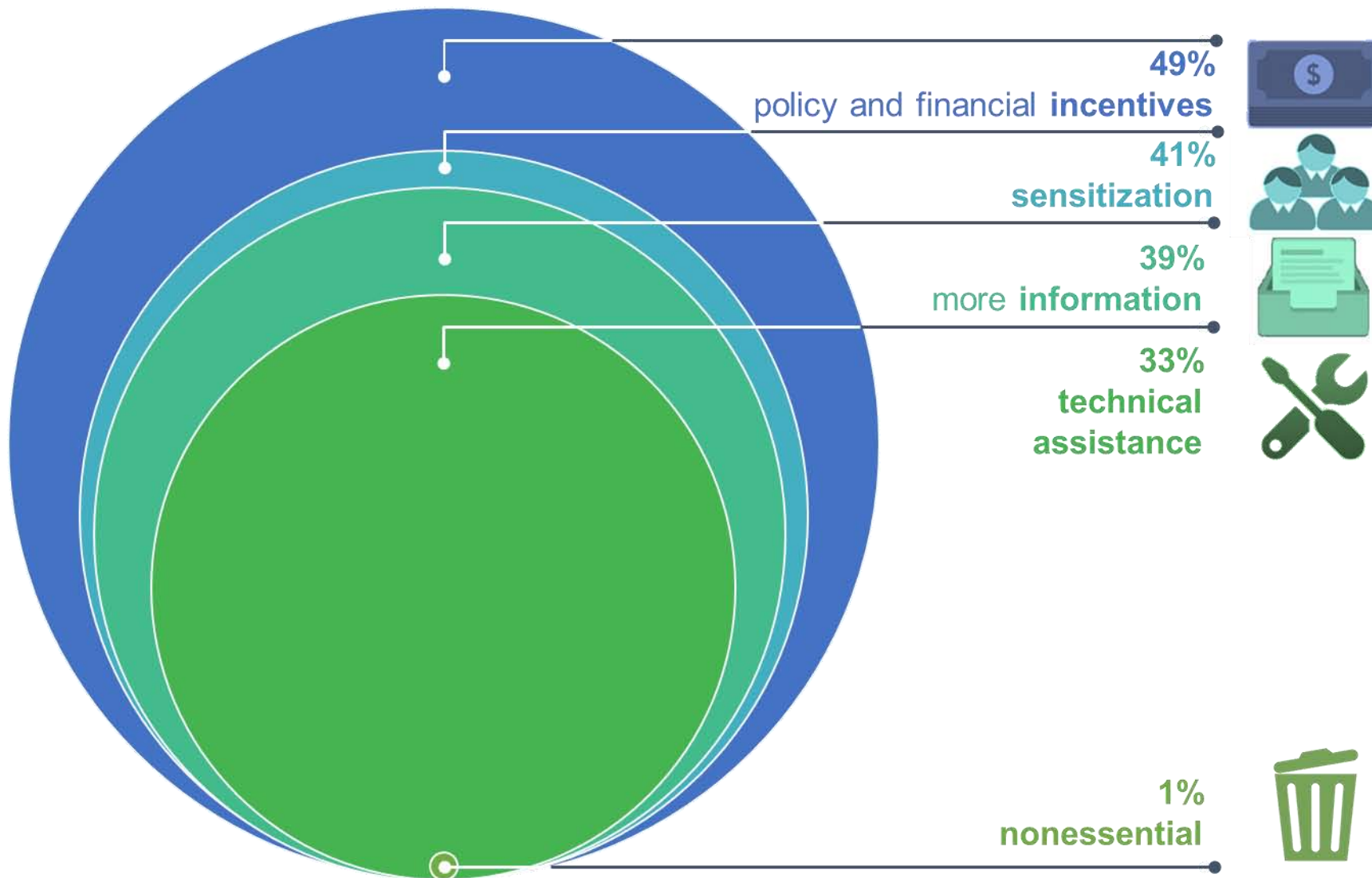


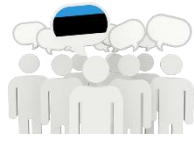
13%
lack of **finances**



5%
lack of **autonomy**







Belgium

Estonia

France

Netherlands

Portugal

Romania

Slovakia

General beliefs

95%

75%

82%

75%

93%

91%

98%

General experiences

50%

35%

55%

55%

55%

61%

80%

Beliefs of potential impacts

71%

68%

64%

45%

82%

81%

83%

Implementation of adaptation actions

32%

15%

50%

25%

14%

-

57%

Number of responses

391

40

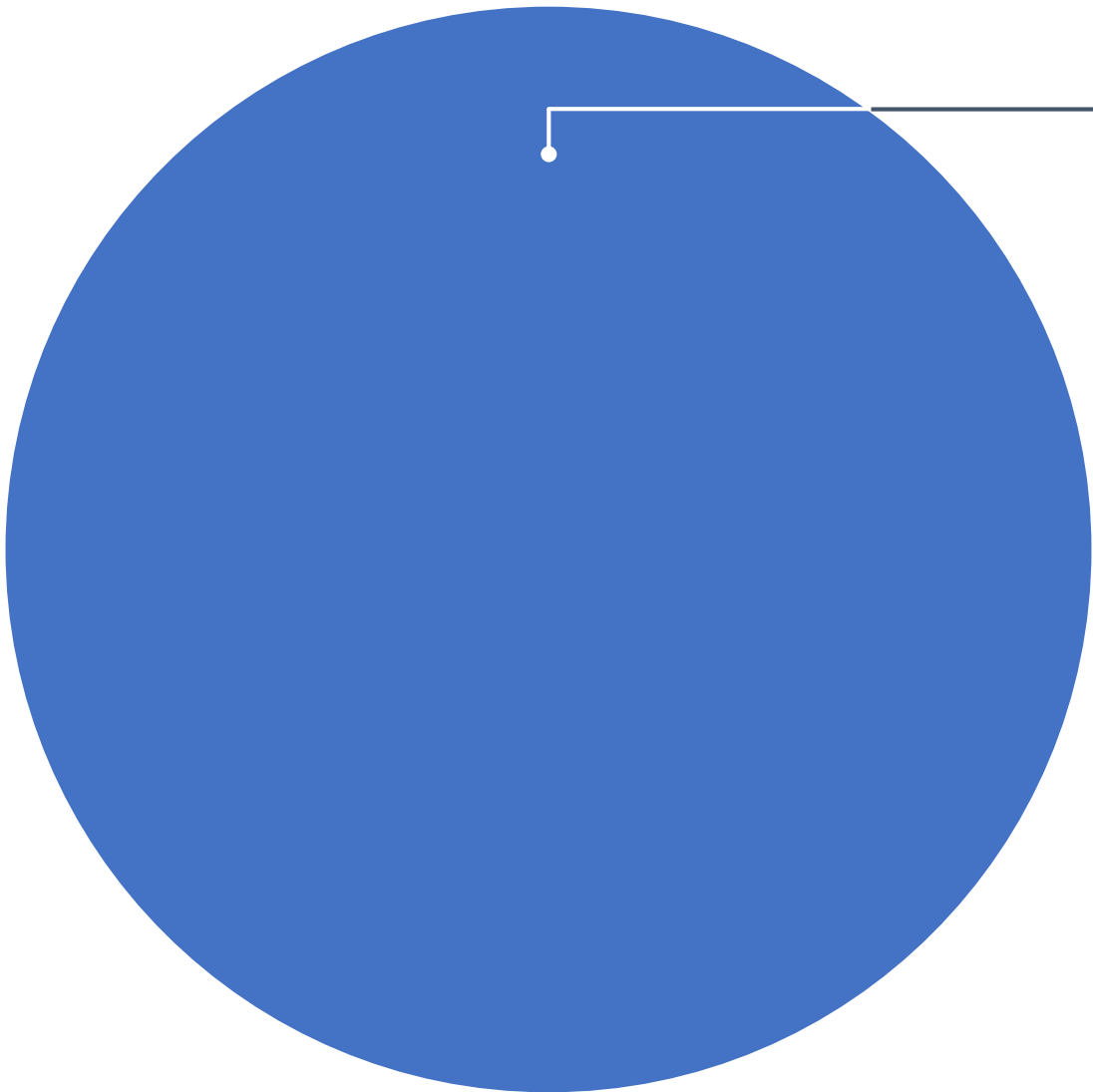
203

20

115

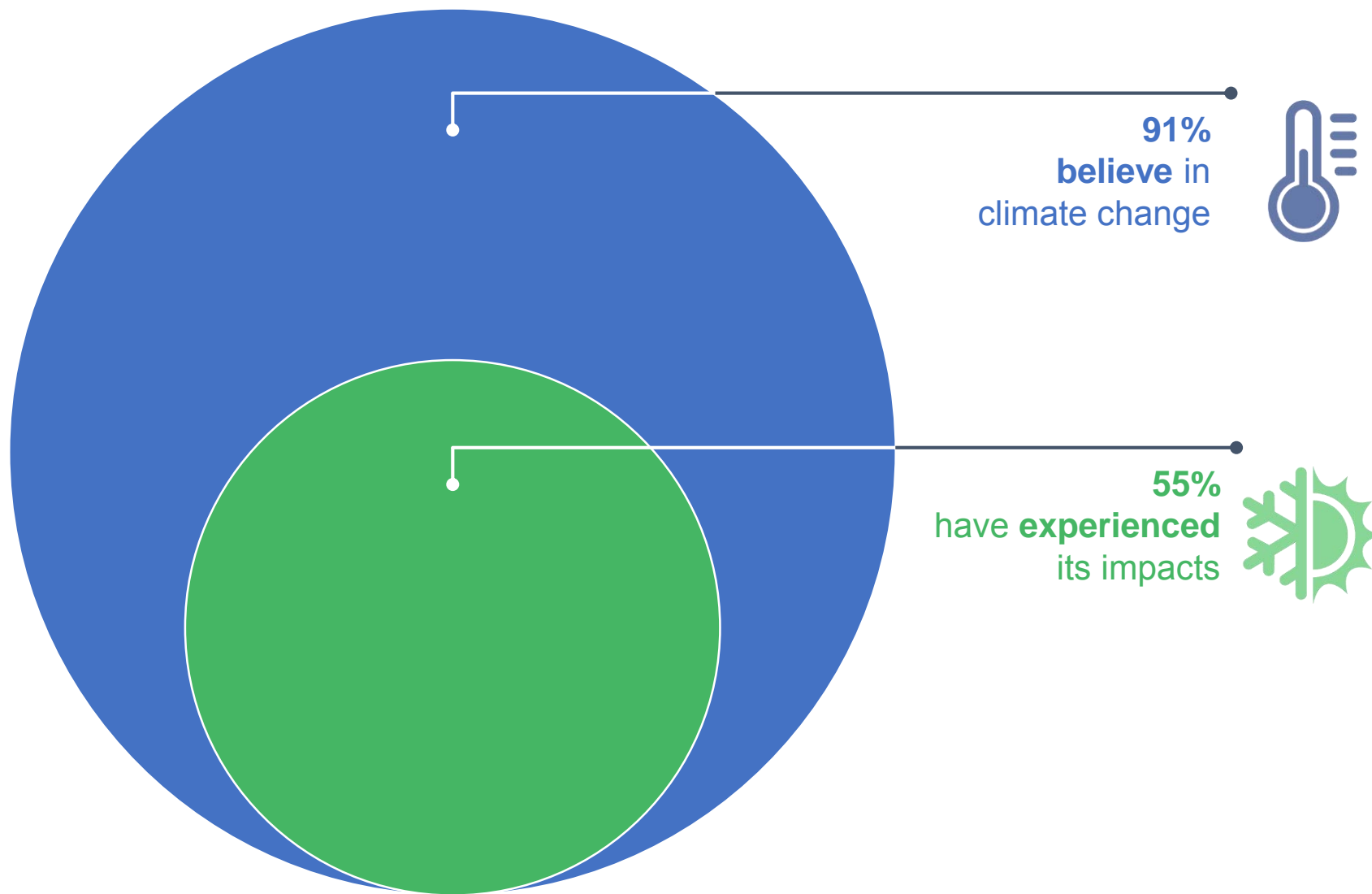
246

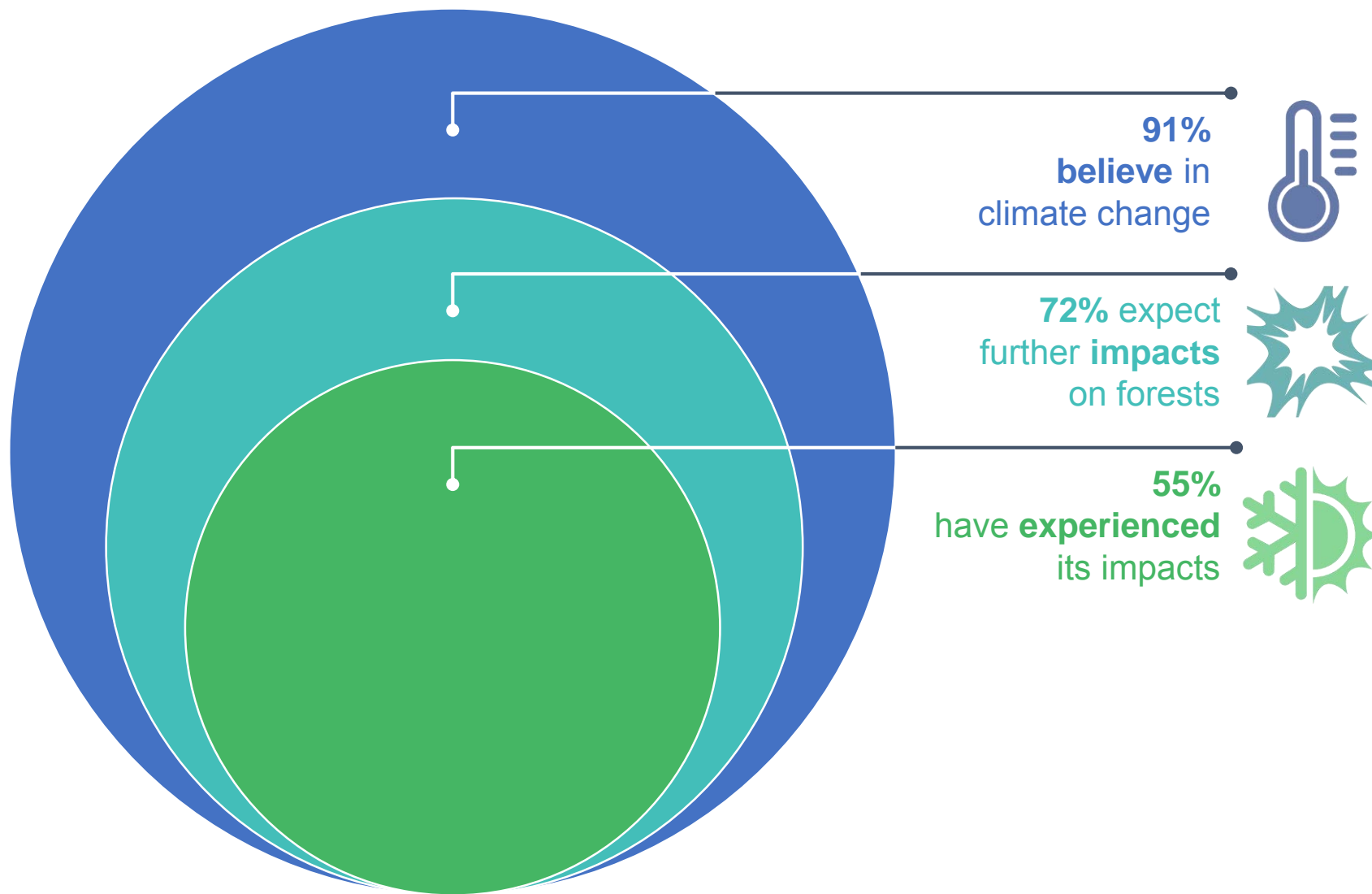
116

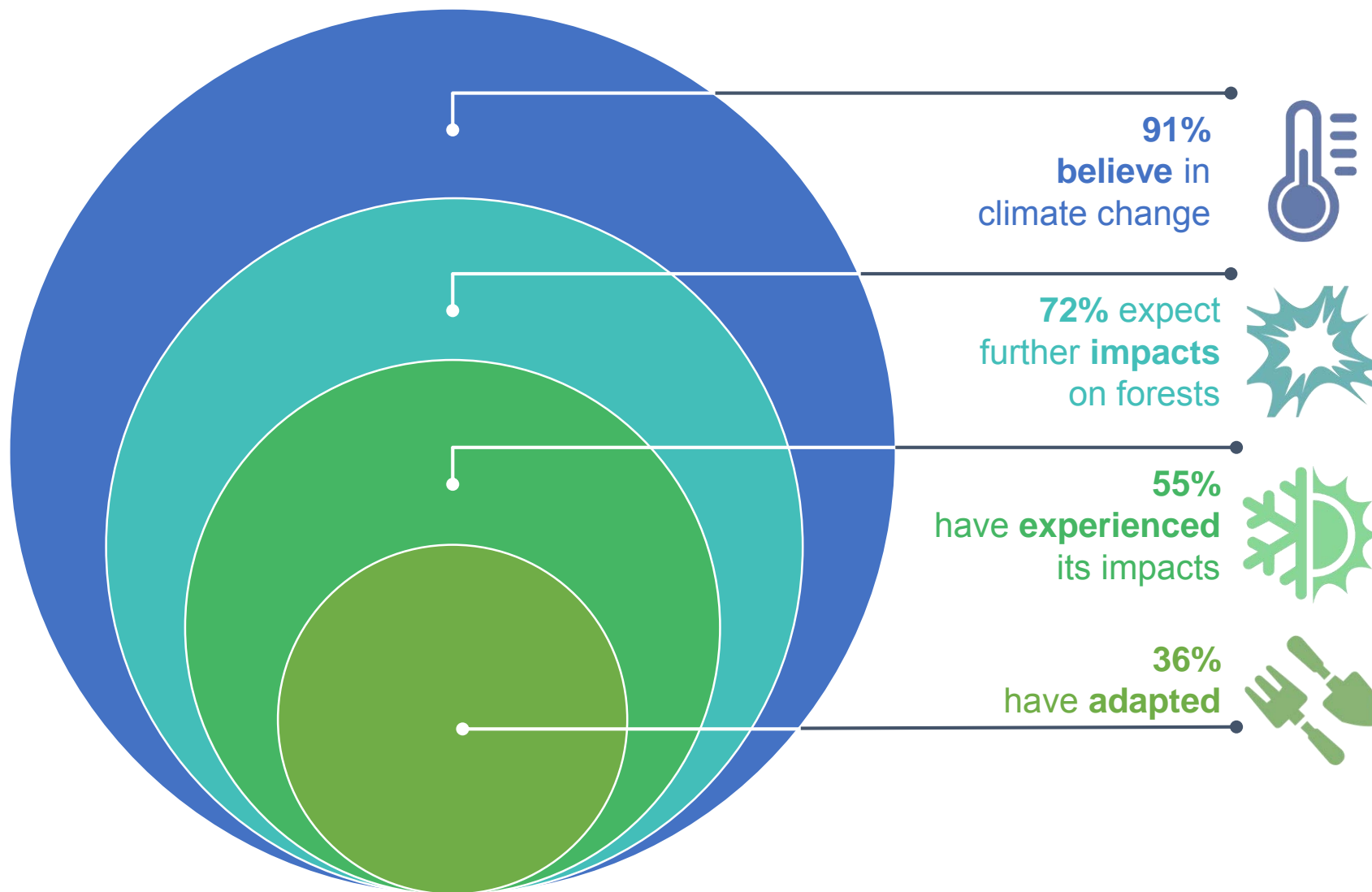


91%
believe in
climate change









Take-Home Message:

- High awareness about climate change (91%) and its impacts (72%),
 - But has little influence on the adaptive responses of forest owners and managers (36%).
- Respondents are concerned but not well informed.
- Need to adapt forest management to climate change, and methodologies for achieving this, must be stressed in future communication.
 - Need for a clear and sufficiently detailed message, presented in a geographically-explicit context, in order to foster adaptation.



anarita.silva@kuleuven.be